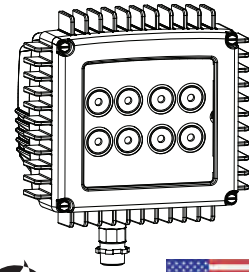


# NITE BRITES

## FSN-LED MINI FLOODLIGHT 24 watt LED



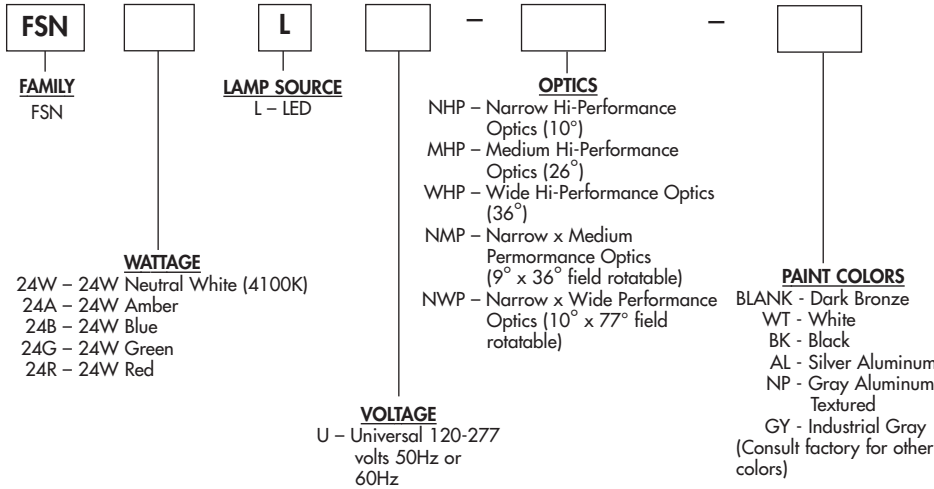
FSN-LED MINI FLOODLIGHT

JOB NAME \_\_\_\_\_  
TYPE \_\_\_\_\_

The LED Mini Floodlight gives the precision and maneuverability needed to create an attractive and functional lighting scheme in a compact package. Use the Mini Floodlight for landscapes, security, signs and displays.

### ORDERING MATRIX

SAMPLE CATALOG NUMBER: FSN24WLU-NHP



### ACCESSORIES (order separately)

- CAM - Crossarm Adapter
- PTF - Post Top Slipfitter
- VFSN - Vandal Shield
- PBM - Pipe Bracket
- VFSN - Visor
- WGFSN - Wire Guard
- WTM - Wiring Trough
- WBF - Wall mount bracket

(For additional descriptions of Floodlight accessories refer to sheet number OA-50010.1)

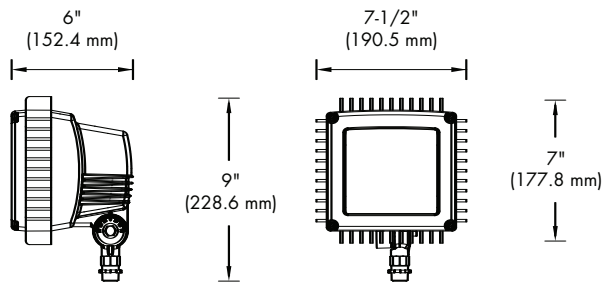
### General Notes:

All options are factory installed.  
All accessories are field installed.  
Data subject to change without notice.

### Predicted L70 Lifetime:

25°C Ambient - >50,000 hours  
(based upon LED manufacturer's supplied LM-80 data  
and in-situ laboratory testing)

### DIMENSIONS

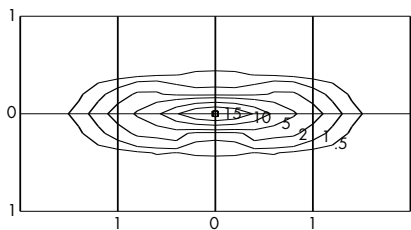


EPA = .22 sq. ft.  
WEIGHT = 8 lbs. (max.)

FL-41043

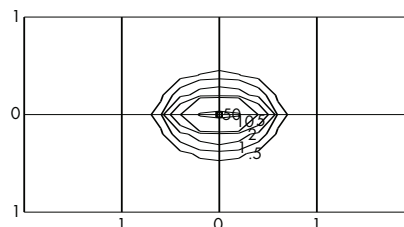
**PHILIPS**  
**Day-Brite**

## PHOTOMETRICS

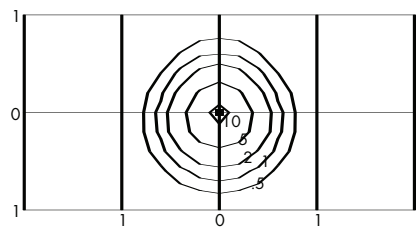


CATALOG NUMBER: FSN24WL-NWP  
 TEST NUMBER: 27857  
 LAMP: LED  
 WATTAGE: 23  
 LUMENS: 782  
 TILT ANGLE: 0°  
 MOUNTING HEIGHT: 10 FEET

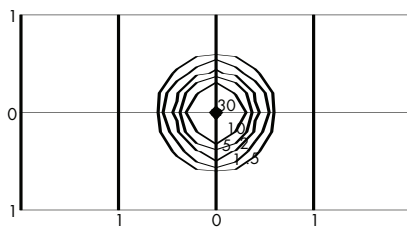
Note:  
 Photometric values based on tests performed in compliance with LM-79



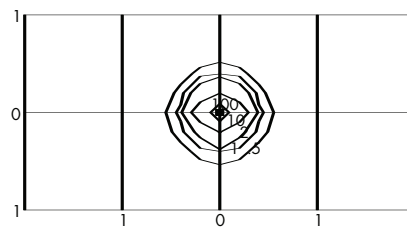
CATALOG NUMBER: FSN24WL-NMP  
 TEST NUMBER: 27854  
 LAMP: LED  
 WATTAGE: 23  
 LUMENS: 774  
 TILT ANGLE: 0°  
 MOUNTING HEIGHT: 10 FEET



CATALOG NUMBER: FSN24WL-WHP  
 TEST NUMBER: 27852  
 LAMP: LED  
 WATTAGE: 23  
 LUMENS: 622  
 TILT ANGLE: 0°  
 MOUNTING HEIGHT: 10 FEET



CATALOG NUMBER: FSN24WL-MHP  
 TEST NUMBER: 27790  
 LAMP: LED  
 WATTAGE: 23  
 LUMENS: 762  
 TILT ANGLE: 0°  
 MOUNTING HEIGHT: 10 FEET



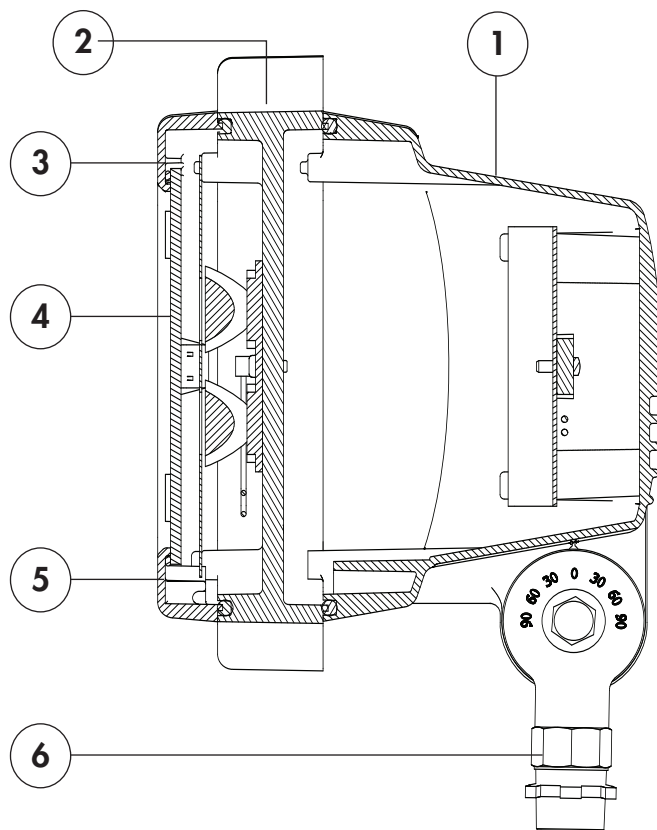
CATALOG NUMBER: FSN24WL-NHP  
 TEST NUMBER: 27853  
 LAMP: LED  
 WATTAGE: 23  
 LUMENS: 826  
 TILT ANGLE: 0°  
 MOUNTING HEIGHT: 10 FEET

## PRODUCT FEATURES

Certified to meet UL1598 standards for wet location and 40°C ambient.

1. Sturdy one piece die cast aluminum housing.
2. Die-cast aluminum heat sink designed for excellent thermal transfer to extend component life.
3. One piece die cast aluminum door has stainless steel door fasteners.
4. Tempered glass lens is thermal shock and impact resistant.
5. Polyester powder finish for excellent impact, corrosion and UV resistance.
6. 1/2" NPT die cast aluminum arm mount.
7. Components are RoHS compliant.
8. LED light engine and driver are field replaceable.

**5 Year Limited Warranty**



**FL-41043**

**DAY-BRITE LIGHTING** • [www.daybritelighting.com](http://www.daybritelighting.com)  
 776 South Green Street • Tupelo, Mississippi 38804 • PH: (662) 842-7212 • FAX: (662) 841-5501  
**CANADIAN DIVISION**  
 189 Bullock Drive • Markham, Ontario L3P 1W4 • PH: (905) 294-9570 • FAX: (905) 294-9811  
 ©JUNE 2010 All rights reserved.

**PHILIPS**  
**Day-Brite**